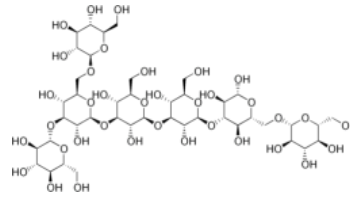


Immuna®



β -glucan

Product Data Sheet

Immuna® is a dietary supplement powder containing a natural β -glucan produced by fermentation. The product can be taken on its own, be made into tablets or mixed into other materials.

Description

Appearance	Off-white powder
Bioactive ingredient	β -glucan
Main carrier	Microcrystalline cellulose
Stability	24 months
Solubility	Very limited in aqueous solutions

Product specifications

Test	Spec range	Method
β -glucan	0.8 – 1.2* mg/ml	GNm-003 (ethanol)
Residual glucose	<20 mg/ml	GNm-008 (Enzymatic)
Total protein	< 0.05 mg/ml	GNm-005 (Bradford)

* A version of Immuna with a higher beta glucan concentration can be made to order

Microbial & Contaminant Analysis

Test	Spec range	Method
Total plate count	NMT 1000 cfu/g	Plate count
Coliforms	< 10 cfs/g	Plate count
Salmonella	Absent	Plate count
E. Coli	Absent	Plate count
P. aeruginosa	Absent	Plate count
S. aureus	Absent	Plate count
Enterobacteria	Absent	Plate count
Yeast/Mold	NMT 100 cfu/g	Plate count
Solvents	No solvents	GC
Pesticides	Not detectable	HPLC
Heavy metals	Not detectable	IPC

Storage and packing

Storage	4-25 °C Should not be frozen
Shelf life	24 months stored in the original unopened packaging under recommended storage conditions
Packing	5 and 10 kg drums