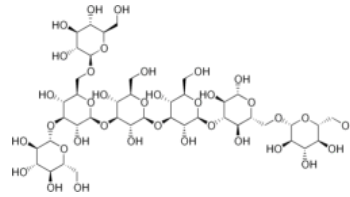


# Lentinex<sup>®</sup>



$\beta$ -(1,3-1,6)-glucan

## Product Data Sheet

Lentinex<sup>®</sup> is a dietary supplement liquid containing a natural  $\beta$ -glucan produced by fermentation.

Lentinex<sup>®</sup> can be taken on its own or mixed into liquid and solid food materials.

### Description

<b>Appearance</b>	Light brown, slightly turbid liquid
<b>Bioactive ingredient</b>	$\beta$ -glucan
<b>Taste and odour</b>	Slightly acidic, odourless
<b>Specific gravity</b>	0.95 -1.05
<b>Solubility</b>	Soluble in water based liquids

### Product specifications

Test	Spec range	Method
$\beta$ -glucan	0.85 – 1.15 mg/ml	GNm-003 (ethanol ppt)
Residual glucose	<20 mg/ml	GNm-008 (Enzymatic)
Total protein	< 0.05 mg/ml	GNm-005 (Bradford)
pH	3 - 4	

### Microbial & Contaminant Analysis

Test	Spec range	Method
Total plate count	NMT 1000 cfu/g	Plate count
Coliforms	< 10 cfs/g	Plate count
Salmonella	Absent	Plate count
E. Coli	Absent	Plate count
P. aeruginosa	Absent	Plate count
S. aureus	Absent	Plate count
Enterobacteria	Absent	Plate count
Yeast/Mold	NMT 100 cfu/g	Plate count
Solvents	No solvents	GC
Pesticides	Not detectable	HPLC
Heavy metals PB, Cd, Hg	Not detectable	IPC

### Storage and packing

<b>Storage</b>	4-40 °C Should not be frozen
<b>Shelf life</b>	24 months stored in the original unopened packaging under recommended storage conditions
<b>Packing</b>	50 mL and 5 L bottles