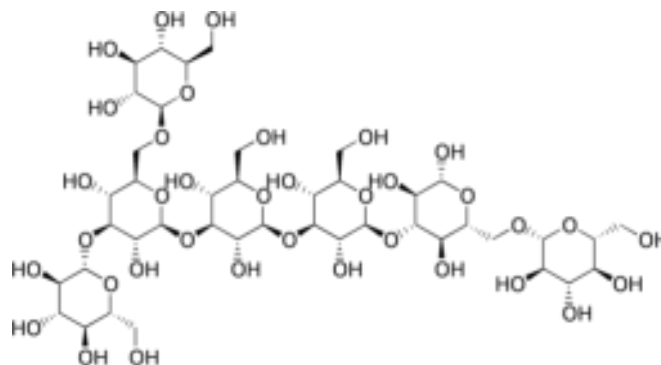


## Product Data Sheet

### Insoluble $\beta$ -glucan powder

Immuna<sup>®</sup> is a dietary supplement powder containing a natural  $\beta$ -glucan produced by fermentation. The product can be taken on its own, be made into tablets or mixed into other materials.



$\beta$ -glucan

Description	
Apperance	Off-white powder
Bioactive ingredient	$\beta$ -glucan
Main carrier	Microcrystalline cellulose
Stability	36 months
Solubility	Poorly soluble in most liquids

Microbial & Contaminant Analysis		
Test	Spec range	Method
Total plate	NMT 100 cfu/g	Plate count
Yeast/Mold	NMT 100 cfu/g	Plate count
Pesticides	Absent	GC
Heavy Metals	Absent	AA
Solvents	No solvents	GC

Product Specifications		
Test	Spec range	Method
$\beta$ -glucan	0.8-1.2 mg/g	GNm-003 (Ethanol)
Residual glucose	<20 mg/g	GNm-008 (Enzymatic)
Total protein	<0.1 mg/g	GNm-005 (Bradford)

Storage and Packing	
Storage	Ambient temperature Should not be frozen
Shelf life	36 months stored in the original unopened packaging under recommended storage conditions
Packing	4 x 5 kg sealed plastic bags in sealed plastic barrel